

to build

PLAN | DESIGN | BUILD | INTERIOR & EXTERIOR DÉCOR

SUMMER 2023

The hotel of the hares
p20

Composting and your
sustainable life
p86

Volume 13 | Issue 4

Essential
tools
FOR THE HOME

add
colour
to your kitchen
with **flair**

Be smart
WHEN GOING
solar
HERE'S HOW

COVER FEATURE
Fourways Group:
Powering Thaba Eco Lifestyle's
Sustainable HVAC Approach



The hotel of the hares

Inspired by nature and complemented with locally sourced natural materials.

✍ Gareth Griffiths 📷 Gareth Griffiths



“It was a dream project because of the idyllic site and brief. The client wanted the very best outcome. A beautiful building was the aim. They worked very closely with the design team through each stage of design development and during construction - LA.”

It is hard to say exactly what aspect of the new Hazendal Hotel & Spa grabs the visitor first. Its green areas, the golf course, or its interiors. The hotel at first appearance is low profile, almost discreet, to the eye. It blends in with a sensitive environment - exactly as designed to do.

A low profile and sensitive development is clearly what the designers had in mind, given the fact that the approximately 3 000m² set of buildings would have to marry with the Cape Dutch architectural legacy of the existing estate, which finds its origins back to 1699.

Interestingly, the “haas” in the name of the estate is ironic in that its founder, Christoffel Hazenwinkel, originally settling from Germany, implies naming of the estate dating back 400 years. However, the name was in fact given due to the abundance of real Cape Hares in the area. Hazenwinkel, therefore, named his property Hazendal, the ‘Valley of the Hares’ way back when; a name which endured since then.

Under its current owners since 1994, a family foundation, much has been done to ensure the legacy of the Cape Hares in the field by ensuring sound sustainable and green practices were made central to all its development.

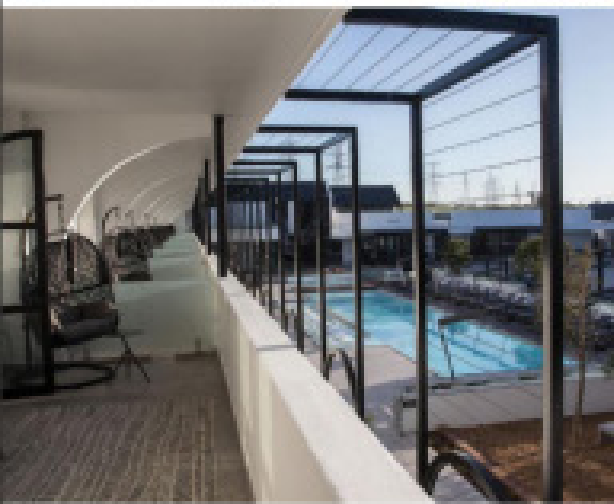
The new hotel

Director of Hazendal Wine Estate, Simone Voloshin, explains that in the eight years since the Voloshin family started their extensive renovation and development of Hazendal Wine Estate, it had become apparent that a luxury hotel, located on the grounds of the estate, was needed to complete the property experience.

Lee-Ann Adendorff, the Project Lead at Boogertman Architects, spoke to TO BUILD about the incorporation of these principles in the entire conceptualisation of the stunning new hospitality feature. She says that landscape and outdoor spaces are a key part of the design.

“The landscape areas were specified to match the existing estate: indigenous plants and paving to match. The pool and water feature with mosaic art were to be a feature. The courtyard was designed to accommodate a large marquis tent for outdoor events. The bar and ballroom overlooks the golf course and Bottelary Valley, and the bedrooms have private decks facing a water reservoir,” she explains.





The interior

Interior design architect, Maurette van Eyssen of Midesign Interior Design Studio, says that their design brief was clear: to create a modern hotel that places the highest priority on comfort while embracing the values of family life.

"This project evolved as a hybrid, striking a balance between traditional glamour and contemporary implementation, resulting in a family-friendly experience. Hazendal immediately stands out with its lush gardens integrated into the environment. The result is an exclusive family retreat, offering 31 Superior and Luxury Rooms, 24 of which are interlinking. There are also two lavish Junior Suites and a Presidential Suite."

The overall interior design features a soft, bright, and colorful palette, "inspired by

nature and complemented with locally sourced natural materials," says van Eyssen.

The rooms and interiors offer a timeless ambiance with modern conveniences seamlessly woven into the design. Crowning glory, the presidential suite, features a fully equipped butler's kitchen and boasts a classic and timeless design.

Water plays a starring role throughout the hotel, and indoor gardens within the passages offer a calming, green-friendly atmosphere. In addition, the clubhouse provides a fully equipped gym with men's

and ladies' locker rooms, inspired by the beauty of the Cape Winelands.

Van Eyssen says that the interior design of each suite was meticulously curated by the team to provide the comforts of home within an intimate setting, complete with expansive terraces and beautiful outdoor living spaces.

"The spa aims to maintain a strong connection to the natural surroundings. The result was a spa inspired by biophilic principles, embracing a human-centric wellness design approach intended to reduce stress and enhance creativity and overall well being," she adds.

Preserving the legacy

Interestingly, the spa is located in the original barn which was partially preserved during the restoration of that part of the existing property. Adendorff takes up the story:

"We had this early 18th Century building which was quite dilapidated, but at the same time could not be demolished or changed too much. This was to become the spa.

"We retained the walls, roof and window and door openings but had to have replica doors and windows to match. Hence, the windows were wooden sash windows.

"At the kraal portion at the back of the existing building, there were two walls which were crumbling. To preserve the stone the contractor had to store the original stones and replace them by hand-fixing back-to-back walls with hoop irons. The stone walls would not support their own weight without the concealed brick wall to reinforce them."

Hence, expertly-developed methods by Afrimat (CLC), covering the use of lime for heritage and old-buildings restoration and crack repair work in South Africa, was utilised.

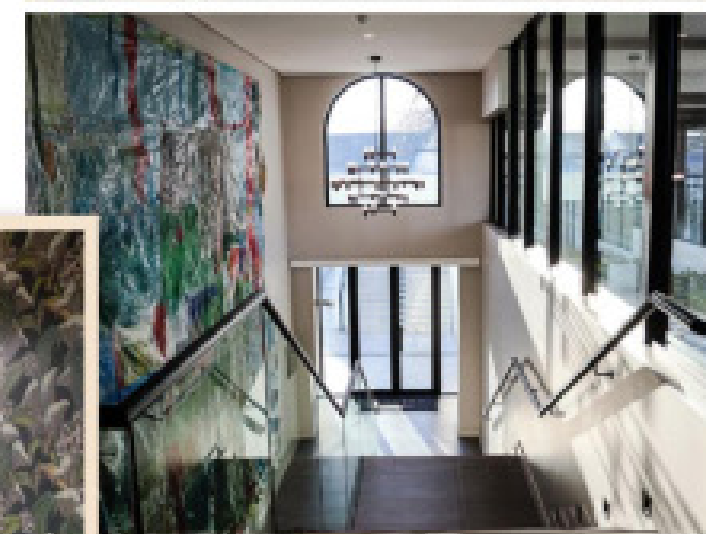
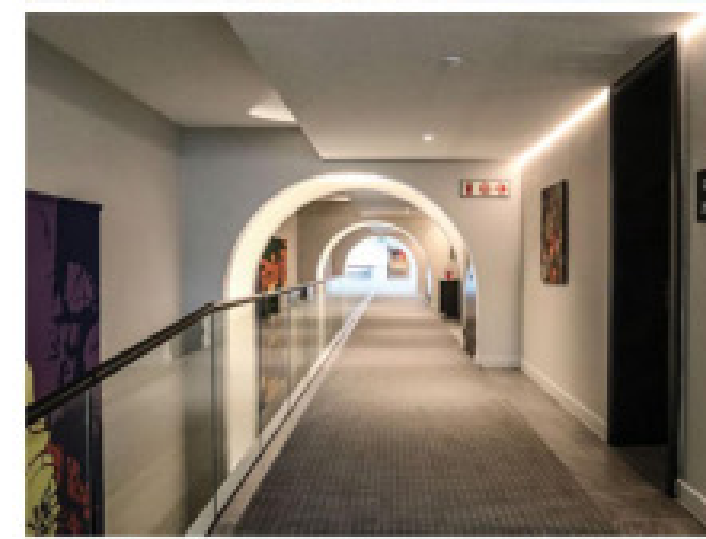
Alongside the existing building was a new steel framed extension to the spa. This contrasts with the legacy building in being very new and modern. The black steel frame and structural glazing flank the existing stone and lime washed walls.

Van Eyssen adds that the interior design was carefully modelled to embody a "work, live, family, and play" ambiance.

Rounded curves, playful colours and touches of green and gold abound. The use of various forms and shapes in the decor ignites curiosity and encourages guests to explore every corner of the space. Art installations are integral to the project, enhancing the overall experience.

3D designs and virtual walkthroughs allowed for numerous iterations and client input, ensuring that the project met the highest standards without compromise.

The exterior design, characterized by its curves, harmonizes with the interior, with captivating mosaic and wall installations".



Cigar, anyone?

The library, family lounge and cigar bar blend various key material choices seamlessly.

The beautiful chandeliers in the main bar area and other double-volume spaces, with a modern take on classic mid-century design, feature golds and textured fabrics.

Project Team

- Owner/Developer and Project Manager:** Hazendal
- Hotel Operator:** Newmark Hotels
- Project Architect:** Boogertman + Partners
- Interior design:** MiDesigns
- Landscape Architect:** Boogertman + Partners
- Engineering - Mechanical & Fire:** FMHW
- Electrical:** KLS
- Structural & Civil:** Struitt
- Main contractor:** Remy Construction



BOOGERTMAN + PARTNERS

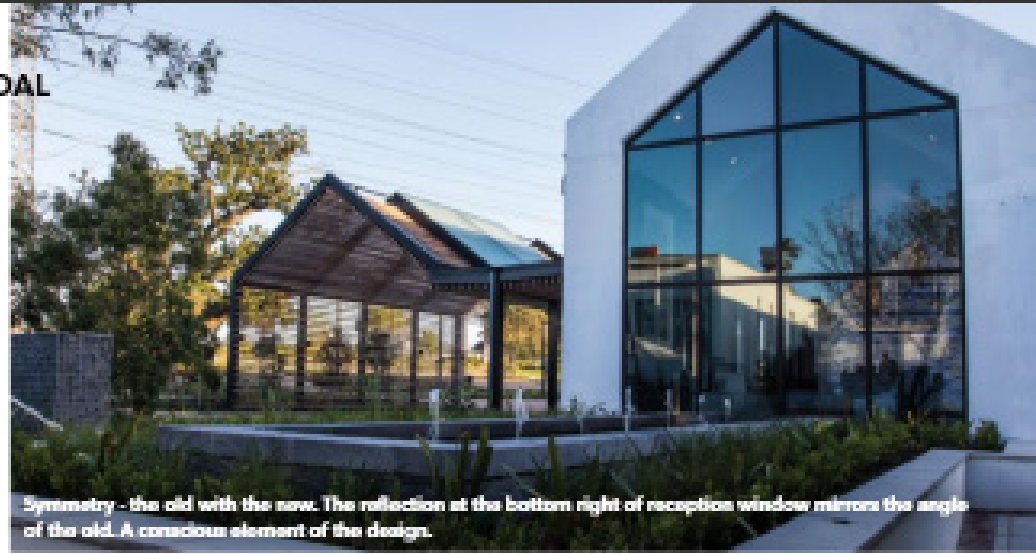
Boogertman + Partners is a locally and internationally acclaimed studio for architecture, interior design, urban design and graphic design. Established in 1982, Boogertman + Partners has offices in Johannesburg, Pretoria, Cape Town, Stellenbosch, Durban and Kenya.

T +27 (21) 879 1501
E mail@boogertmanstb.co.za



Citra brings sustainable, affordable, and beautiful homes to as many people as possible using world-leading technology, alleviating the global housing shortage with reliable, innovative solutions.

T +27 (0)21 205 1141
E info@citra.build
W www.citra.build



Symmetry - the old with the new. The reflection at the bottom right of reception window mirrors the angle of the old. A conscious element of the design.

The outdoor spaces

Mariska Els, Landscape Team Leader, Boogertman & Partners in Pretoria, says that the Hazendal hotel landscape encapsulates the beauty of the entire site with its opulence and intricacy of design elements. Each space is distinctly designed for its purpose to ensure the guest enjoys their visit in this eclectic collaboration of old and new.

"As Hazendal is a precious heritage site, the landscape provides experiential spaces created in the unique outdoor rooms set to

engage with the existing site, its vegetation and landmarked trees. Emphasizing the exciting softscape the vegetation was carefully selected to suit the aesthetics of the surrounding environment and to enhance the vibrance of the Cape Winelands through incorporation of species of variety and textures," she says.

"Lighting, whether natural or manmade, played a crucial role in creating stunning spatial illusions, enhancing the overall atmosphere of Hazendal hotel. ↑

About the Hazendal by its operator, Newmark Hotels



Hotel General Manager, Carly de Jong (left), Hazendal Director, Simone Voloshin, cuts the ceremonial ribbon to open the hotel (right).

Each of The Hazendal's 34 rooms have been individually decorated and stocked with every modern convenience. 31 beautifully appointed Superior and Luxury Rooms open onto patios furnished with comfortable modern swing chairs. Two spacious suites boast private jacuzzis.

The 122m² Presidential Suite features a lavishly decorated lounge and dining room, an airy main bedroom overlooking a lake flanked by the Bottelary Hills, a marble clad bathroom and a private deck perched over the lake with its own patio lounge suite and jacuzzi.

The hotel's shady central courtyard with its heated swimming pool and stylish pergolas form the heart of the hotel. There is also a spa where guests can indulge in pampering treatments, visit the Hammam area, the nail studio or experience an outdoor massage at the lakeside treatment pod.

Under the direction of Executive Chef Michelle Theron, The Restaurant serves a refined menu designed to complement the existing food offerings on the estate, while the bar and cigar lounge serves signature cocktails, the estate's fine wines, and Hazendal's own range of vodka.



The Hazendal

For more information and booking information, scan the QR code.



Walter Labuschagne (Boogertman), Maureen van Eysen (Midesign), Leo-Ann Adendorff and Eugene Henning (both from Boogertman).