



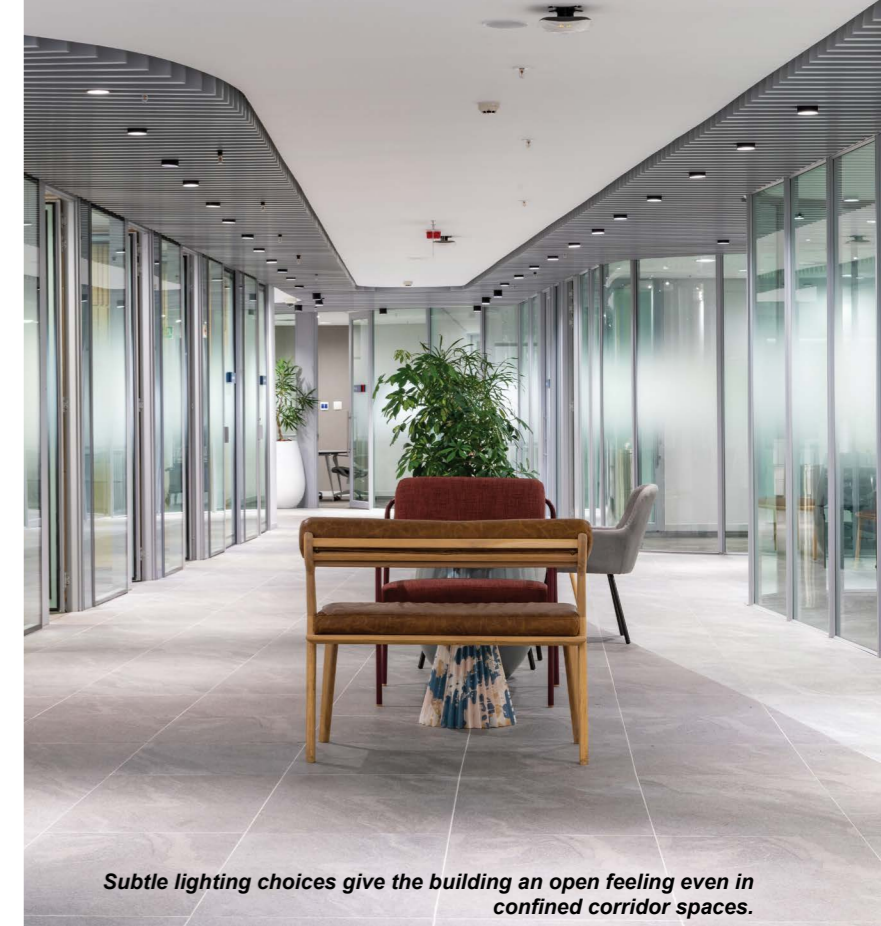
Momentum: The fine balance of artificial & natural light

Blu2Light gives light fittings added tech power

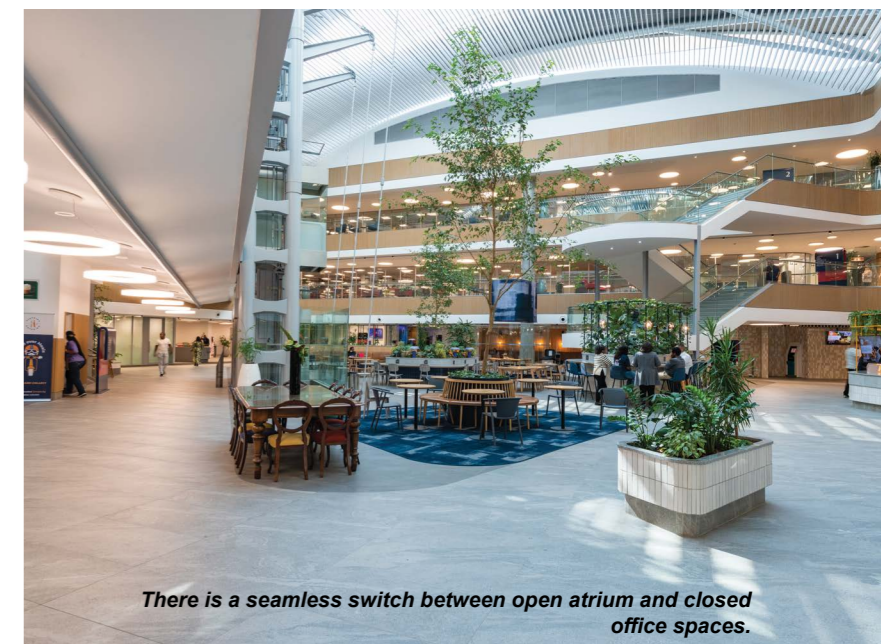
Illuminate your indoor & outdoor spaces for a new feel



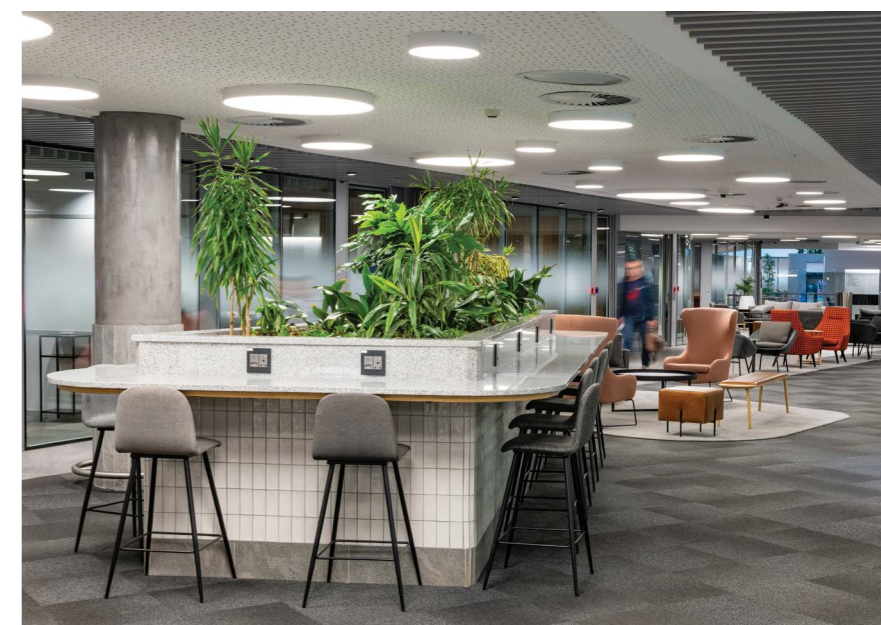
The main atrium space in the Momentum Metropolitan Holdings building strikes a balance between natural and artificial light.



Subtle lighting choices give the building an open feeling even in confined corridor spaces.



There is a seamless switch between open atrium and closed office spaces.



Moment in time

Momentum Metropolitan Holdings is lit up in all its glory thanks to Regent Lighting Solutions' hands-on approach to illumination.

Julia du Plessis, an associate at master architects Boogertman + Partners, says that re-imagining the Momentum Metropolitan Holdings building in Centurion, Gauteng was “an incredible project that was filled with some amazing architecture and lighting work”. “There are three large atriums – there are the east and west spaces, but the main atrium is breath-taking. We discovered that these areas were not used correctly primarily

because they were too hot. There was so much natural light to work with, which is not the world's worst problem to have,” says Du Plessis. Catherine Feher from illumination specialists Regent Lighting Solutions was brought in and “together with the architects, Regent assessed the lighting available, as well as the lighting required. This helped to find a balance that best utilised the natural light while also providing sufficient artificial lighting”.

Light versus “dark”

One of the easiest ways to re-activate the atrium spaces, which are central to the day-to-day operation within the building, was with shading to balance the light. “We wanted to create a space that encourages inclusion, connection and collaboration for everyone in the building. With human-centred design principles, this dynamic space brings about a sense of inclusiveness, purpose, identity, communication, expression and a history emphasising efficient connected spaces that receive both natural light and carefully considered luminaires,” says the architect. “We supplemented the shade by tinting the windows and adding baffles internally to cancel some of the natural light.”

Feher adds, “We used various size Canolux surface-mounted fittings, at various lumen outputs throughout the building as functional lights. They



Simple downlights and desk lamps create atmosphere.

have been strategically positioned throughout further blending form and function.”

Illumination solution

Du Plessis says that the main atrium was central to the re-imagination as it is such a huge – and operationally important – space. “We originally looked at the geometries and had various options. We chose the straight curve principle. We started with a straight line that moves into points of curvature. Our lighting solution from Regent connects with the curves and emphasises the building architecture with an almost glow effect. There is also an acoustic ceiling that we worked with; the circular pattern on the ceiling has been scaled up, almost a design explosion.” Feher explains, “We utilised Regent Sky pendant luminaires in this space as they are not only beautiful and complement the architecture, they provide incredible light. We used four sizes, ranging from 350mm to 1200mm. They are all LED lights, which means that they are not only efficient in terms of energy consumption, they have a longer lifespan and are more durable than traditional incandescent bulbs. They are also more usable in terms of controllability, which means the client can get the perfect lighting they need from a relatively simple lighting product.”

The ground floor of the Momentum building operates somewhat like a train station – it is busy and a hive of activity, yet it must remain business-like as a space where employees, guests and visitors can go about their functions with the least amount of interruption. “We made sure that this ground floor was well lit with both natural and artificial lighting,” explains Du Plessis. “There is a synergy between form and function, and we worked together with Regent to create a space where everyone feels comfortable. While there is

a huge space, you feel confined in the area you are in thanks to the almost comforting lighting.”

The team at Regent focused on the current global environment when designing the lighting solution, says Feher. “We opted for a green strategy that is sustainable while adding to the human experience and comfort. This was implemented to create balance and well-being for everyone in the building, while also giving them the ideal lighting to conduct their work in. It is a delicate balancing act to get right – the use of LEDs, combined with various fittings such as pendants, track lights, recessed and surface-mounted downlights and custom luminaires, gave us the perfect tools to ensure the perfect lighting solution was achieved.”

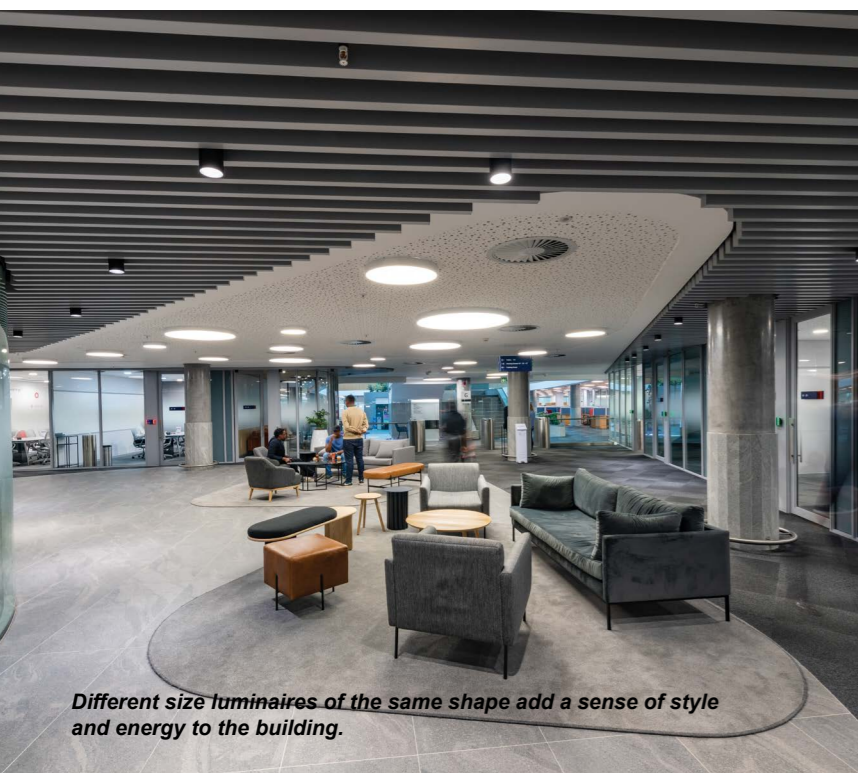
Bringing balance to the space

Thanks to elements such as the ceiling pattern and building’s construction, the teams at Boogertman and Regent were able to develop a harmony with the upgrade. “We started with an initial re-imagining plan, then pulled through the larger geometries and added lighting solutions that fitted,” says Du Plessis. “This renovation was a massive undertaking – the Momentum building is 30 000m². We had to strike a balance between what fitted the renovation, the building and the budget. Our partnership with Regent was flawless for this project because they came in with some innovative lighting solutions that worked well. We were able to play with scaling throughout the building, which gives people a sense of calm when moving from one space to another as there is consistency. The lighting is both aesthetically pleasing while giving consummate illumination for working in.”

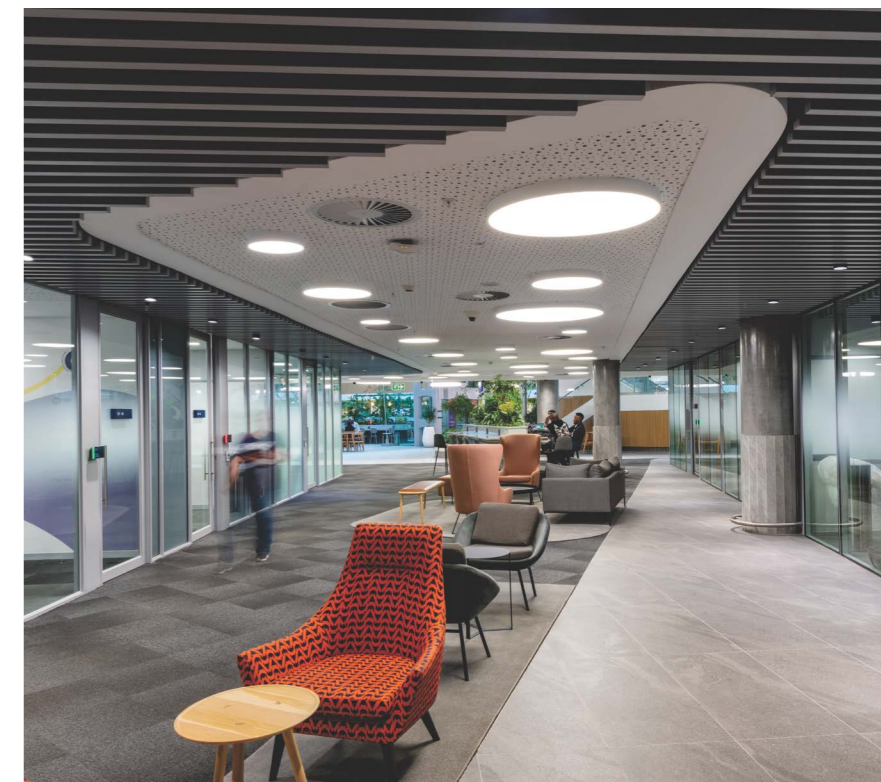
The two design companies opted only for LED light fittings for obvious reasons, explains Feher. “LEDs are incredibly light on energy usage, which means the monthly electricity usage has been



The lighting styles are carried throughout the building, from the more simpler meeting rooms, through to the lux boardrooms.



Different size luminaires of the same shape add a sense of style and energy to the building.





Pendants add a touch of glamour to spaces and are used throughout the Momentum building in subtle ways.



Regent Lighting Solutions has made sure that there is continuity and a sense of flow throughout all of the building spaces.

dramatically reduced. There are factors such as longevity, serviceability and maintenance demands – those are key to using LEDs. They are more durable, which means that they are replaced less frequently. That reduces the costs of service and maintenance crews, as well as replacement fittings, which saves money at the end of the day.” This falls in line with base practice for most companies, where reducing costs by increasing operational functionality is in harmony.”

Consistency is key

While the atriums are central to the building, the adjacent meeting rooms are equally important, explains Du Plessis. “The meeting rooms fall into different categories. They are close to the atrium so that guests are not forced to walk through the office spaces to get to the rooms, which gives

them a sense of calm. Lighting is consistent throughout the building; just on different scales and levels.” Feher says that “it was important to carry the same philosophy throughout the building, regardless of the space in question. “We have retained the round shape in all luminaire choices throughout the walkways, meeting rooms and office areas. The use of complementary round luminaires throughout the building gives a feeling of continuity, that you are in the same space and that the status quo remains no matter where you are in the building. The lux meeting rooms, for example, are on the highest level with the highest functionality. We have tried to carry that thought to the lower-category meeting rooms, which are slightly less lux but equally functional. We did this with consistent fittings and lighting, how people perceive the spaces and where they are working.”

The architects and illumination engineers have re-imagined the Momentum building with the greatest of care, striking a balance with the volumes of natural lighting, artificial illumination and open spaces. “We have created a state-of-the-art redesign that lends itself to function as well as design aesthetic and appeal. The teams have developed illumination solutions that accentuate the physical building, transforming it into a space where people are able to perform their activities with the highest level of confidence and comfort. From the pendants and downlights, to the bespoke wall-mounted luminaires that have been used to accentuate the space, the illumination of this building is part of its magic. Every minute detail was considered on this project, and we think that the results speak volumes for the teams involved,” conclude Du Plessis and Feher. LID

To view the full publication visit: <https://user-54716422671.cld.bz/Lighting-in-Design-Q4-2023>